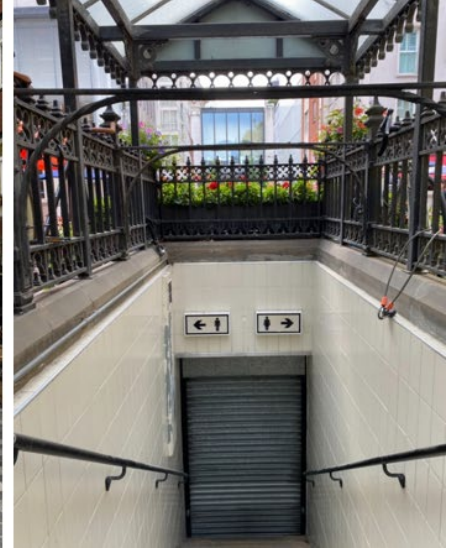


St Christopher's Place Former Public Convenience

498.4 sq ft of rarely available accommodation for conversion



Underground former Public Convenience with highly prominent attractive entrance in the heart of **St Christopher's Place**.

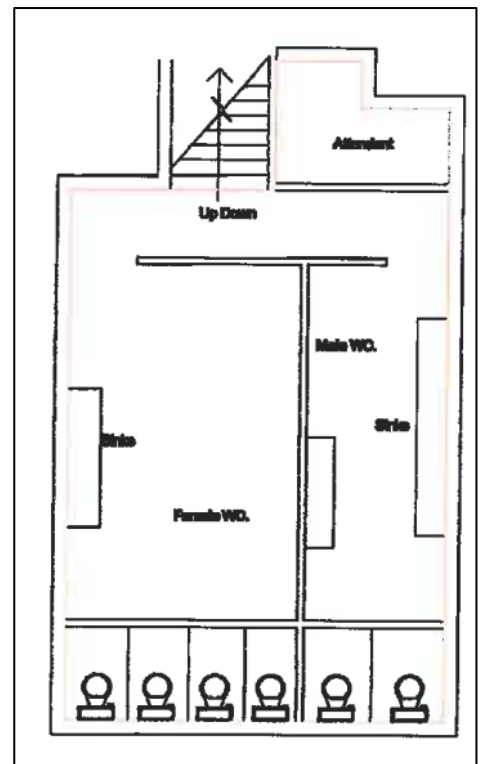
Located between Oxford Street and Marylebone, St Christopher's Place is one of London's favourite social hubs with its bustling cafés, alfresco dining offer, high street and independent boutique retail offerings alike. It boasts broad hours of economy from morning to night and a very high footfall in an enviable location for maximum brand exposure.

The former Public Convenience is located in the very heart of St Christopher's Place and although currently fitted out as Public Convenience could be opened up to create an attractive space which would lend itself extremely well to conversion to a bar, fitness offer, gallery, showroom or other use.

The unit comprises the following area:

498.4 ft²

46.3 m²



Plan not to scale.

On behalf of **Westminster Council** we are seeking an interested party prepared to obtain planning and undertake conversion works as necessary.

All expressions of interest welcome, with the accommodation available on terms to be agreed, **subject to planning.**

For further information, please contact:

Henry Foreman

Telephone: 07469 155716

Email: henryforeman@fmx.co.uk

